



STILETTO STIRRUPS FOR METRIC 4481

FITS: VARIOUS APPLICATIONS. REQUIRES MODEL SPECIFIC KÜRYAKYN FOOTPEG ADAPTERS AND STILETTO FOOTPEGS (P/N 4476). BOTH SOLD SEPARATELY.

PARTS INCLUDED

- 1 Stiletto Stirrup Assembly – Male Mount, Left
- 1 Stiletto Stirrup Assembly – Male Mount, Right
- 1 Installation Instructions

Please read and understand entire instructions before starting installation.

THANK YOU FOR CHOOSING KÜRYAKYN!

NOTE It is the installers' responsibility to make sure all fasteners (including pre-assembled) are tightened before operation of motorcycle. Kuryakyn WILL NOT warranty components that are lost due to improper installation. Periodic maintenance may be required.

NOTE For your convenience, this instruction includes procedures regarding parts not included in this kit. These references are provided to simplify installation and should not be taken as an expression that footpegs or mounting adapters are included. Optional domed end caps are available to replace the pointed end caps. (Sold separately.)

TOOLS SUGGESTED

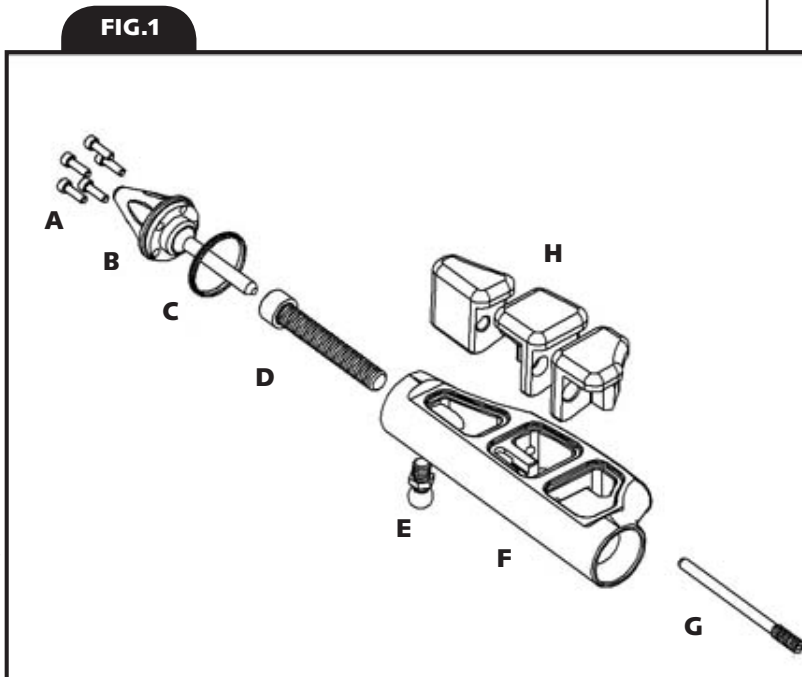
3/32" Hex Key and 1/4" Extended Hex Driver, Ratchet, 1-1/8" Wrench or 12" Adjustable Wrench.

PROCEDURE

STEP 1 Remove existing footpegs. Note position of all hardware.

STEP 2 Install model specific footpeg adapters.

STEP 3 With a 3/32" hex key, remove the #5-40 x 3/8" socket head cap screws (FIG.1-A), end cap (FIG.1-B), and knurled trim ring (FIG.1-C) from one of the Stiletto Pegs. Remove the end rubber from the peg body (FIG.1-F) to expose the 5/16"-18 x 2" socket head cap screw (FIG.1-D).



CUSTOMER SERVICE

877.370.3604 (toll free)

INSTALLATION QUESTIONS

techsupport@kuryakyn.com
or call 715.247.2983

LIMITED WARRANTY

Kuryakyn warrants that any Kuryakyn products sold hereunder, shall be free of defects in materials and workmanship for a period of one (1) year from the date of purchase by the consumer excepting the following provisions:

- Kuryakyn shall have no obligation in the event the customer is unable to provide a receipt showing the date the customer purchased the product(s).
- The product must be properly installed, maintained and operated under normal conditions.
- Kuryakyn makes no warranty, expressed or implied, with respect to any gold plated products.
- Kuryakyn shall not be liable for any consequential and incidental damages, including labor and paint, resulting from failure of a Kuryakyn product, failure to deliver, delay in delivery, delivery in nonconforming condition, or for any breach of contract or duty between Kuryakyn and a customer.
- Kuryakyn products are often intended for use in specific applications. Kuryakyn makes no warranty if a Kuryakyn product is used in applications other than intended.
- Kuryakyn electrical products are warranted for one (1) year from the date of purchase by the consumer. Components of Kuryakyn products containing L.E.D.s will be warranted for defects in materials and workmanship for 3 years from the date of purchase.
- Kuryakyn makes no warranty of any kind in regard to other manufacturer's products distributed by Kuryakyn. Kuryakyn will pass on all warranties made by the manufacturer and where possible, will expedite the claim on behalf of the customer, but ultimately, responsibility for disposition of the warranty claim lies with the manufacturer.

ABOUT OUR CATALOG

You'll find all our innovations for H-D, GL and Metric Cruisers in our annual catalogs. Order online today—select the "CATALOGS" icon. Each Kuryakyn product comes with a Proof-of-Purchase good for a complimentary catalog. Details in packaging.

Be sure to ask your local dealer about other Kuryakyn products, the motorcycle parts and accessories designed for riders by riders.

©2005 Kuryakyn USA All Rights reserved.



STEP 4 Remove the 5/16"-18 X 2" socket head cap screw (FIG.1-D) and replace it with the 5/16"-18 x 3-3/8" socket head cap screw (FIG.2-L) included with the Stiletto Stirrups.

STEP 5 Slip the peg (FIG.1) onto the stirrup mount (FIG.2-I) and slide the assembly onto the model specific footpeg adapter installed in STEP 2. Adjust the angle of the peg and stirrup arm so the rider's or passenger's foot sits squarely on the rubber pads and the heel is comfortably supported when seated on the motorcycle. Securely tighten the 5/16"-18 x 3-3/8"socket head cap screw attaching the peg and stirrup to the model specific footpeg adapter.

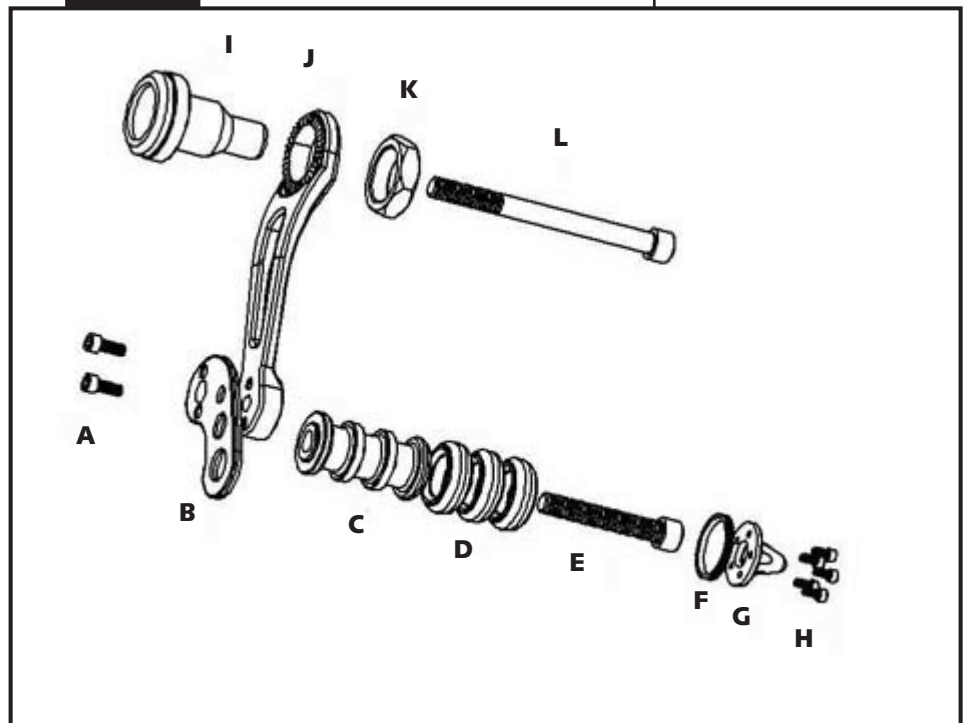
STEP 6 Install knurled trim ring, end cap, and #5-40 x 3/8" socket head cap screws on the pegs.

STEP 7 Repeat STEP 3 through STEP 7 for the other Stiletto Stirrup.

WARNING! STILETTO STIRRUPS FOR METRIC APPLICATIONS ARE INTENDED TO ACT ONLY AS A SUPPLEMENTAL FOOT SUPPORT. THE BALL OF THE FOOT SHOULD REMAIN ON THE PEG AT ALL TIMES. EXCESSIVE FORCE AGAINST THE HEEL REST COULD CAUSE IT TO ROTATE UNEXPECTEDLY WHICH COULD RESULT IN LOSS OF CONTROL, INJURY, OR DEATH.

Ride On!

FIG. 2



PAGE

2