



INSTALLATION



ANTI-ROTATION MOUNT FOR SOFTAIL 4548

CUSTOMER SERVICE

877.370.3604 (toll free)

INSTALLATION QUESTIONS

techsupport@kuryakyn.com
or call 715.247.2983

LIMITED WARRANTY

Kuryakyn warrants that any Kuryakyn products sold hereunder, shall be free of defects in materials and workmanship for a period of one (1) year from the date of purchase by the consumer excepting the following provisions:

- Kuryakyn shall have no obligation in the event the customer is unable to provide a receipt showing the date the customer purchased the product(s).
- The product must be properly installed, maintained and operated under normal conditions.
- Kuryakyn makes no warranty, expressed or implied, with respect to any gold plated products.
- Kuryakyn shall not be liable for any consequential and incidental damages, including labor and paint, resulting from failure of a Kuryakyn product, failure to deliver, delay in delivery, delivery in nonconforming condition, or for any breach of contract or duty between Kuryakyn and a customer.
- Kuryakyn products are often intended for use in specific applications. Kuryakyn makes no warranty if a Kuryakyn product is used in applications other than intended.
- Kuryakyn electrical products are warranted for one (1) year from the date of purchase by the consumer. Components of Kuryakyn products containing L.E.D.s will be warranted for defects in materials and workmanship for 3 years from the date of purchase.
- Kuryakyn makes no warranty of any kind in regard to other manufacturer's products distributed by Kuryakyn. Kuryakyn will pass on all warranties made by the manufacturer and where possible, will expedite the claim on behalf of the customer, but ultimately, responsibility for disposition of the warranty claim lies with the manufacturer.

ABOUT OUR CATALOG

You'll find all our innovations for H-D, GL and Metric Cruisers in our annual catalogs. Order online today—select the "CATALOGS" icon. Each Kuryakyn product comes with a Proof-of-Purchase good for a complimentary catalog. Details in packaging.

Be sure to ask your local dealer about other Kuryakyn products, the motorcycle parts and accessories designed for riders by riders.

©2005 Kuryakyn USA All Rights reserved.



FITS: '86-UP SOFTAIL MODELS (EX. DEUCE, FAT BOY AND DELUXE) NOTE: MAY BE USED ON DEUCE, FAT BOY AND DELUXE IF STOCK SHOTGUN EXHAUST AND REAR EXHAUST SUPPORT BRACKET HAVE BEEN REMOVED AND REPLACED BY A STAGGERED DUAL OR 2 INTO 1 EXHAUST SYSTEM.

PARTS INCLUDED

- 1 Right Mount
- 1 Left Mount
- 2 3/8-16 x 1-1/4 Socket Head Cap Screw (SHCS)
- 1 Right Saddlebag Relocation Bracket
- 1 Left Saddlebag Relocation Bracket
- 2 5/16-18 x 1 Button Socket Cap Screw (BSCS)
- 2 5/16-18 Low Crown Acorn Nut
- 4 5/16 Flat Washer
- 2 1/2 OD x 3/8 ID Spacer
- 2 Bolt Head Spacer
- 2 3/8-16 Nylon Insert Nut
- 1 Installation Instructions

Please read and understand entire instructions before starting installation.

THANK YOU FOR CHOOSING KÜRYAKYN!

WARNING! YOU WILL BE WORKING AROUND THE ENGINE AND EXHAUST SYSTEM DURING INSTALLATION. ENSURE THAT THE ENGINE AND EXHAUST SYSTEM HAVE FULLY COOLED TO PREVENT INJURY.

CAUTION! Ensure that the installation of this product does not interfere with the proper operation of the motorcycle before riding.

ATTENTION! It is the installer's responsibility to ensure all fasteners (including pre-assembled) are tightened before operation of the motorcycle. Kuryakyn will not warranty components lost due to improper installation. Periodic maintenance may be required.

TOOLS SUGGESTED

Set of hex wrenches , combination wrenches, socket set with ratchet

PROCEDURE

STEP 1 Park the motorcycle on a hard, level surface; turn off the ignition and allow the engine to cool.

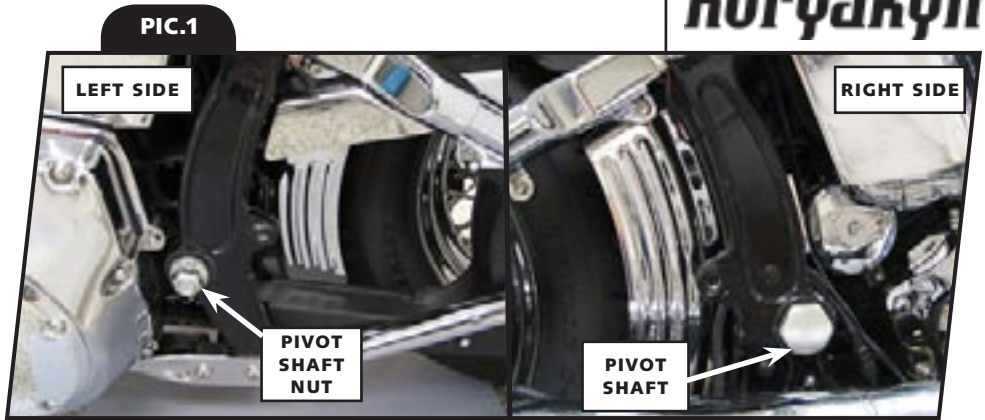
-cont.-

STEP 2 Remove the stock peg mounts from both sides of the motorcycle. Set them aside, they will not be reused. See [PIC.1](#).

STEP 3 "Pre-fit" the mounts. Position the mounts over the pivot shaft head on the right side and the pivot shaft nut on the left side. See [PIC.1](#). Hold the new mounts in place to determine the angle of the clevis and footpeg when installed. [PIC.2](#).

STEP 4 Loosen the fastener on the backside of the mounts to adjust the angle of the clevis. [PIC.3](#).

STEP 5 Tighten the fastener to engage the splines on the clevis and mount. Ensure that the splines fully engage.

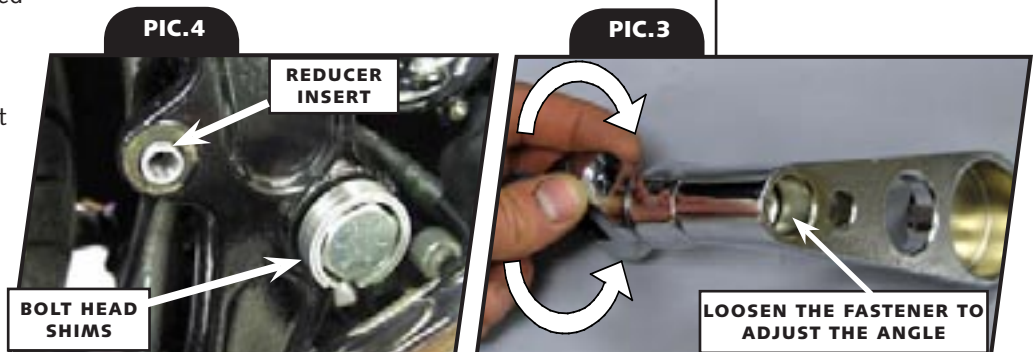


NOTE EVOLUTION MODELS ONLY

A Place the bolt head shims on the RIGHT SIDE swing arm pivot bolt as in [PIC.4](#). Place the circular reducer inserts in the footpeg mounting holes as shown in [PIC.4](#) and [PIC.5](#).

B Place each assembly on the bike so the anti-rotation arms cover the ends of the swingarm pivot bolts and the mounting holes line up with the mounting holes in the frame. If the bike is equipped with stock saddlebags, remove the stock rubber isolated support strap and replace it with the supplied relocation bracket. Position the saddlebag support relocation brackets as shown in [PIC.6](#).

C Attach the lower front saddlebag mount to the relocation bracket with the 5/16"-18 x 1" BSCS, two flat washers, and acorn nut as shown in [PIC.6](#).



STEP 6 Position the mounts in place and secure them with the included 3/8-16 x 1-1/4 SHCS; tighten the fasteners.

STEP 7 Install the new footrests (sold separately). Refer to the instructions included with the new footrests.

STEP 8 Ensure all fasteners are tight and that there is proper clearance before operating the motorcycle.



Ride On!