



INSTALLATION

LONGHORN OFFSET DUALY WITH 1-1/4" MAGNUM QUICK CLAMPS

4575

PARTS INCLUDED

- 1 Longhorn Offset Dually Highway Peg assembly- Left Side
- 1 Longhorn Offset Dually Highway Peg assembly- Right Side
- 1 Installation Instructions

Please read and understand entire instructions before starting installation.

THANK YOU FOR CHOOSING KÜRYAKYN!

IN ORDER TO PROTECT YOU AND OTHERS FROM POSSIBLE INJURY AND/OR PROPERTY DAMAGE OR LOSS, PLEASE PAY CLOSE ATTENTION TO ALL INSTRUCTIONS, WARNINGS, CAUTIONS AND ATTENTION NOTES REGARDING THE USE AND CARE OF THIS PRODUCT.

WARNING! THIS INDICATION ALERTS YOU TO THE FACT THAT IGNORING THE CONTENTS DESCRIBED HEREIN CAN RESULT IN POTENTIAL DEATH OR SERIOUS INJURY

ATTENTION! This indication alerts you to the fact that ignoring the contents described herein may negatively affect product performance and functionality.

CAUTION! This indication alerts you to the fact that ignoring the contents described herein can result in potential injury or material damage.

TOOLS SUGGESTED

Set of hex wrenches, combination wrenches, or socket set and ratchet.

STRICTLY OBSERVE THE FOLLOWING GUIDELINES IN ORDER TO USE THE PRODUCT PROPERLY AND AVOID POTENTIALLY DANGEROUS ACCIDENTS.

STEP 1 Read and understand all steps in the instructions before starting the installation. Park the motorcycle on a hard, level surface and turn off the ignition.

STEP 2 Referring to FIG.1, remove the 1/2" bolt, spacer, and internal lock washer, from the Longhorn Arm. Set these items aside for now, they will be used to install the Longhorn Arm.

ATTENTION! Determine the mounting location and orientations of the Magnum Clamp before fully tightening the fasteners. The clamp may leave marks when tightened down.

CUSTOMER SERVICE

877.370.3604 (toll free)

INSTALLATION QUESTIONS

techsupport@kuryakyn.com
or call 715.247.2983

LIMITED WARRANTY

Kuryakyn warrants that any Kuryakyn products sold hereunder, shall be free of defects in materials and workmanship for a period of one (1) year from the date of purchase by the consumer excepting the following provisions:

- Kuryakyn shall have no obligation in the event the customer is unable to provide a receipt showing the date the customer purchased the product(s).
 - The product must be properly installed, maintained and operated under normal conditions.
 - Kuryakyn makes no warranty, expressed or implied, with respect to any gold plated products.
 - Kuryakyn shall not be liable for any consequential and incidental damages, including labor and paint, resulting from failure of a Kuryakyn product, failure to deliver, delay in delivery, delivery in nonconforming condition, or for any breach of contract or duty between Kuryakyn and a customer.
- Kuryakyn products are often intended for use in specific applications. Kuryakyn makes no warranty if a Kuryakyn product is used in applications other than intended.
- Kuryakyn electrical products are warranted for one (1) year from the date of purchase by the consumer. L.E.D.'S contained in components of Kuryakyn products will be warranted for defects in materials and workmanship for 3 years from the date of purchase where as all other components shall be warranted for one(1) year. This includes, but is not limited to; control modules, wiring, chrome & other components.
- Kuryakyn makes no warranty of any kind in regard to other manufacturer's products distributed by Kuryakyn. Kuryakyn will pass on all warranties made by the manufacturer and where possible, will expedite the claim on behalf of the customer, but ultimately, responsibility for disposition of the warranty claim lies with the manufacturer.

ABOUT OUR CATALOG

For purchasing Kuryakyn® products, you can receive a complete catalog free of charge. Send the Proof-of-Purchase below with your address to: Kuryakyn, P.O. Box 339, Somerset, WI 54025. Please indicate either Accessories Catalog for Harley-Davidson® or GL & Metric Cruisers.

Be sure to ask your local dealer about other Kuryakyn® products, the motorcycle parts and accessories designed for riders by riders.

©2005 Kuryakyn USA® All Rights reserved.

-cont.-

4575-22MC-1210

kuryakyn.com



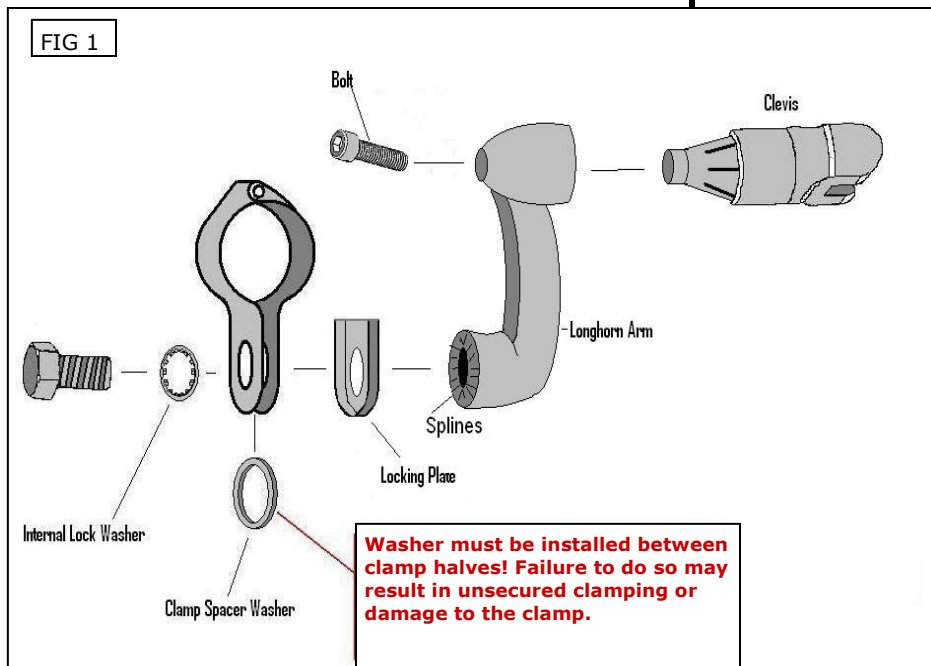
STEP 3 Place the Magnum Quick Clamp around the engine guard tube that you choose as your mounting point. Close the clamp; insert the bolt that was removed in STEP 2, being sure to use the internal lock washer, and place the spacer washer in between the clamp halves (refer to FIG.1.)

NOTE **Spacer washer must be installed between clamp halves! Failure to do so may result in unsecured clamping or damage to the clamp.**

STEP 4 Place the lock plate on the other side of the clamp so that the smooth side is facing the clamp and the splines are facing outwards.

ATTENTION! **Determine the mounting location and orientations of the Magnum Clamp before fully tightening the fasteners. The clamp may leave marks when tightened down.**

STEP 5 Place the Longhorn arm on the clamp and secure with the 1/2" bolt. Do not fully tighten them at this point. Sit on the bike and determine the desired arm orientation, adjust as needed and tighten the bolt.

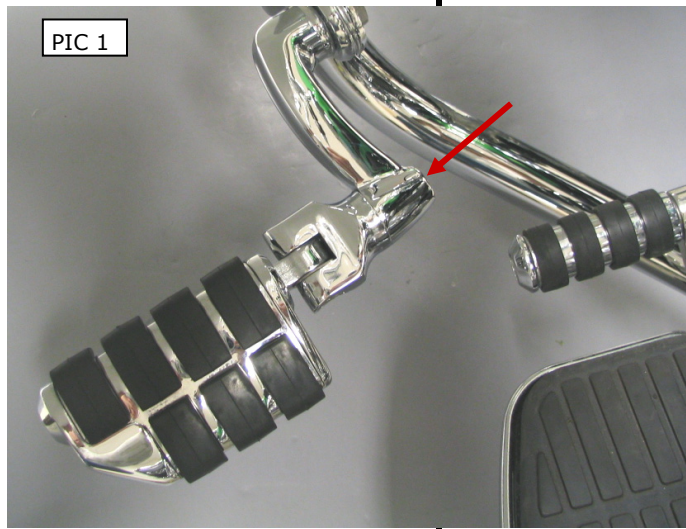


STEP 6 The angle of the peg may be adjusted by loosening the 5/16" SHCS that secures the clevis to the arm (refer to PIC.1.)

STEP 7 Rotate the clevis to the desired position and tighten securely.

STEP 8 Repeat STEP 2 through 7 for the opposite side.

WARNING! CHECK TO MAKE SURE THAT THERE IS PROPER CLEARNCE WHEN CORNERING. LOSS OF CONTROL OF THE MOTORCYCLE AND SERIOUS INJURY MAY OCCUR IF THE PEG/ARM IS NOT POSITIONED PROPERLY. REPOSITION THE LONGHORN ARM IF NECESSARY SO THAT THERE IS ADEQUATE CORNERING CLEARANCE.



STEP 9 Tighten all fasteners.

ATTENTION! **It is the installer's responsibility to ensure that all of the fasteners (including preassembled) are tightened before operation of the motorcycle. Kuryakyn will not warranty components lost due to improper installation. Periodic maintenance may be required.**

Ride On!