



INSTALLATION



TRIPLE WHAMMY RUN-TURN-BRAKE LIGHT KIT 4608

FOR SUZUKI

FITS: SUZUKI, ALL '05-UP BOULEVARD M50 MODELS & '05 C50 MODELS ONLY

**Installation of this product may be in violation of FMVSS #108*

PARTS INCLUDED

- 1 Run-Turn-Brake Controller
- 1 Metric Load Equalizer
- 1 Right Clear Lens/Reflector
- 1 Left Clear Lens/Reflector
- 2 Red Incandescent Bulbs
- 1 Installation Instructions

Please read and understand entire instructions before starting installation.

THANK YOU FOR CHOOSING KÜRYAKYN!

IN ORDER TO PROTECT YOU AND OTHERS FROM POSSIBLE INJURY AND/OR PROPERTY DAMAGE OR LOSS, PLEASE PAY CLOSE ATTENTION TO ALL INSTRUCTIONS, WARNINGS, CAUTIONS AND ATTENTION NOTES REGARDING THE USE AND CARE OF THIS PRODUCT.

CAUTION! This indication alerts you to the fact that ignoring the contents described herein can result in potential injury or material damage.

ATTENTION! This indication alerts you to the fact that ignoring the contents described herein may negatively affect product performance and functionality.

TOOLS SUGGESTED

Set of hex wrenches, combination wrenches, Phillips screwdriver.

STRICTLY OBSERVE THE FOLLOWING GUIDELINES IN ORDER TO USE THE PRODUCT PROPERLY AND AVOID POTENTIALLY DANGEROUS ACCIDENTS.

CAUTION! Always install the load equalizer upstream of any existing aftermarket multifunction control modules. Do not install a load equalizer between a module and the turn signals as this will overload the module. Overloading will damage the module and create a fire hazard!

CAUTION! Load equalizers generate heat when in use. Avoid using the turn signals for an extended period of time, otherwise the load equalizer will overheat. Never operate the four-way flashers unless you first remove the load equalizer. Overheating damages the load equalizer causing loss of turn signal operation and could create a fire hazard!

PROCEDURE

STEP 1 Read and understand all steps in the instructions before starting the installation. Park the motorcycle on a hard, level surface and turn off the ignition.

-cont.-

CUSTOMER SERVICE

877.370.3604 (toll free)

INSTALLATION QUESTIONS

techsupport@kuryakyn.com
or call 715.247.2983

LIMITED WARRANTY

Kuryakyn warrants that any Kuryakyn products sold hereunder, shall be free of defects in materials and workmanship for a period of one (1) year from the date of purchase by the consumer excepting the following provisions:

- Kuryakyn shall have no obligation in the event the customer is unable to provide a receipt showing the date the customer purchased the product(s).
- The product must be properly installed, maintained and operated under normal conditions.
- Kuryakyn makes no warranty, expressed or implied, with respect to any gold plated products.
- Kuryakyn shall not be liable for any consequential and incidental damages, including labor and paint, resulting from failure of a Kuryakyn product, failure to deliver, delay in delivery, delivery in non-conforming condition, or for any breach of contract or duty between Kuryakyn and a customer.
- Kuryakyn products are often intended for use in specific applications. Kuryakyn makes no warranty if a Kuryakyn product is used in applications other than intended.
- Kuryakyn electrical products are warranted for one (1) year from the date of purchase by the consumer. Components of Kuryakyn products containing L.E.D.s will be warranted for defects in materials and workmanship for 3 years from the date of purchase.
- Kuryakyn makes no warranty of any kind in regard to other manufacturer's products distributed by Kuryakyn. Kuryakyn will pass on all warranties made by the manufacturer and where possible, will expedite the claim on behalf of the customer, but ultimately, responsibility for disposition of the warranty claim lies with the manufacturer.

ABOUT OUR CATALOG

You'll find all our innovations for H-D, GL and Metric Cruisers in our annual catalogs. Order online today—select the "CATALOGS" icon. Each Kuryakyn® product comes with a Proof-of-Purchase good for a complimentary catalog. Details in packaging.

Be sure to ask your local dealer about other Kuryakyn® products, the motorcycle parts and accessories designed for riders by riders.

©2005 Kuryakyn USA® All Rights reserved.



kuryakyn.com

STEP 2 Remove the screw from the bottom of the right signal housing as shown in [PIC. 1](#).

STEP 3 Twist the lens towards the motorcycle as shown in [PIC. 2](#).

STEP 4 Replace the stock bulb with an included red bulb.

STEP 5 Refer to [PIC. 3](#) and determine the left and right lens, the tab will be up and the screw boss will be down. The cutout that is circled will go towards the motorcycle.

STEP 6 Install the right lens so that the tab on top of the lens will fit in the slot, and twist away from the motorcycle.

STEP 7 Reinsert the screw that was removed in STEP 2, being careful not to over tighten it.

STEP 8 Repeat STEP 2 through STEP 7 for the left side.

STEP 9 Remove the seat from the motorcycle.

STEP 10 Locate the main taillight harness as shown in [PIC. 4](#) and disconnect the connectors.

STEP 11 Plug the female connector from the controller into the male connector into the harness and the male connector from the controller into the female connector from the wiring harness.

STEP 12 Secure the load equalizer to the frame tube or similar structure; secure the wiring out of the way of pinch points or extreme heat.

ATTENTION! Secure all wiring away from any moving parts, pinch points or extreme heat. Küryakyn WILL NOT warranty any electrical component that fails due to pinched, crimped, broken, abraded, melted or frayed wires.

STEP 13 AND STEP 14 ARE ONLY FOR MOTORCYCLES WHOSE TURN SIGNAL FLASH RATES ARE DIFFERENT THAN STOCK FLASH RATES.

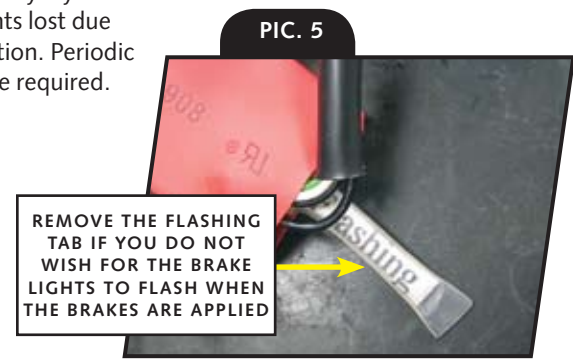
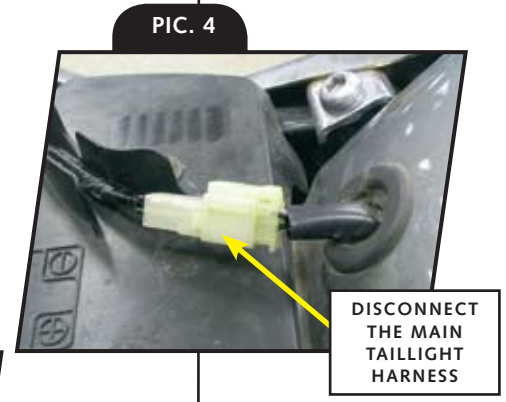
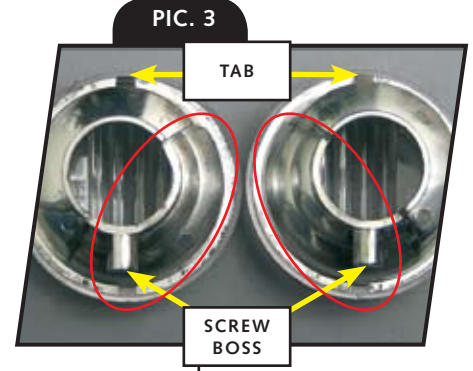
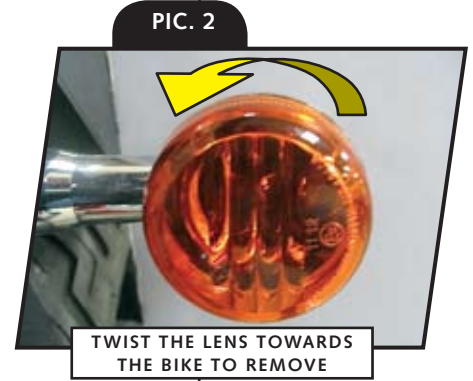
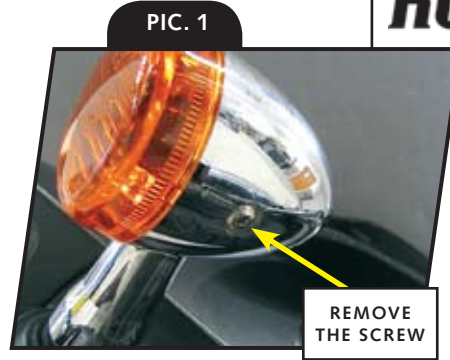
STEP 13 Install the new load equalizer into either of the white three pin connectors from the run-turn-brake controller.

STEP 14 Secure the equalizer to the frame tube.

CAUTION! Do not secure the load equalizer to the control module! Excess heat from the load equalizer could damage the control module.

STEP 15 If you do not wish the brake lights to flash when the brakes are applied, remove the flashing tab from the control module as shown in [PIC. 5](#).

ATTENTION! It is the installer's responsibility to ensure that all of the fasteners (including pre-assembled) are tightened before operation of the motorcycle. Küryakyn will not warranty components lost due to improper installation. Periodic maintenance may be required.



Ride On!