



INFINITY LIGHTS 4622

FOR GL1800 TRUNK

FITS: ALL '01-UP GL1800 MODELS

PARTS INCLUDED

- 1 Right Infinity Trunk Light
1 Left Infinity Trunk Light
1 Hardware Kit Including:
16 4" Cable Ties
2 1" x 8" Pieces of Tape
2 Rubber Grommets
2 Alcohol Pads
2 Dielectric Grease Packs
1 Controller Switch
2 102" Wire Extensions
2 Y Lizard Light Adapters
2 Double Female Lizard Light Connecters
1 Installation Instructions

THANK YOU FOR CHOOSING KÜRYAKYN!

IN ORDER TO PROTECT YOU AND OTHERS FROM POSSIBLE INJURY AND/OR PROPERTY DAMAGE OR LOSS, PLEASE PAY CLOSE ATTENTION TO ALL INSTRUCTIONS, WARNINGS, CAUTIONS AND ATTENTION NOTES REGARDING THE USE AND CARE OF THIS PRODUCT.

ATTENTION! This indication alerts you to the fact that ignoring the contents described herein may negatively affect product performance and functionality.

TOOLS SUGGESTED

Set of hex wrenches, screwdrivers, electrical tape, masking tape, drill bits, drill, warm soapy water and clean rag, tape measure/ruler, scissors.

STRICTLY OBSERVE THE FOLLOWING GUIDELINES IN ORDER TO USE THE PRODUCT PROPERLY AND AVOID POTENTIALLY DANGEROUS ACCIDENTS.

PROCEDURE

STEP 1 Read and understand all steps in the instructions before starting the installation. Park the motorcycle on a hard, level surface and turn off the ignition.

ATTENTION! A factory service manual may be helpful in performing this installation. Do not attempt to perform this installation if you are not confident in your ability to complete all of the steps in the procedure; consult a trained technician.

STEP 2 Clean the trunk with warm soapy water and a clean rag, rinse and let the trunk dry.

STEP 3 Determine the right Infinity light (refer to PIC. 1).

-cont.-

CUSTOMER SERVICE
877.370.3604 (toll free)

INSTALLATION QUESTIONS
techsupport@kuryakyn.com
or call 715.247.2983

LIMITED WARRANTY
Kuryakyn warrants that any Kuryakyn products sold hereunder, shall be free of defects in materials and workmanship for a period of one (1) year from the date of purchase by the consumer excepting the following provisions:

- Kuryakyn shall have no obligation in the event the customer is unable to provide a receipt showing the date the customer purchased the product(s).
• The product must be properly installed, maintained and operated under normal conditions.
• Kuryakyn makes no warranty, expressed or implied, with respect to any gold plated products.
• Kuryakyn shall not be liable for any consequential and incidental damages, including labor and paint, resulting from failure of a Kuryakyn product, failure to deliver, delay in delivery, delivery in non-conforming condition, or for any breach of contract or duty between Kuryakyn and a customer.
• Kuryakyn products are often intended for use in specific applications. Kuryakyn makes no warranty if a Kuryakyn product is used in applications other than intended.
• Kuryakyn electrical products are warranted for one (1) year from the date of purchase by the consumer. Components of Kuryakyn products containing L.E.D.s will be warranted for defects in materials and workmanship for 3 years from the date of purchase.
• Kuryakyn makes no warranty of any kind in regard to other manufacturer's products distributed by Kuryakyn. Kuryakyn will pass on all warranties made by the manufacturer and where possible, will expedite the claim on behalf of the customer, but ultimately, responsibility for disposition of the warranty claim lies with the manufacturer.

ABOUT OUR CATALOG
You'll find all our innovations for H-D, GL and Metric Cruisers in our annual catalogs. Order online today--select the "CATALOGS" icon. Each Kuryakyn product comes with a Proof-of-Purchase good for a complimentary catalog. Details in packaging.

Be sure to ask your local dealer about other Kuryakyn products, the motorcycle parts and accessories designed for riders by riders.

©2005 Kuryakyn USA All Rights reserved.



**STEP 4** Hold the right light on the trunk, determine a mounting location behind the antenna mount, and make sure there is adequate clearance around the light.

**NOTE:** When mounting the light on the left side and there is not an antenna or passenger armrests installed on the trunk to use as a reference point for the front of the light; referring to PIC. 2, measure the distance from the front of the light to the trim on the trunk. Measure and mark the same distance on the left side of the trunk to place the front edge of the light.

**STEP 5** Once the mounting position has been determined, mark several locations along the light with masking tape for reference points as shown in PIC. 3.

**STEP 6** Remove the light from the trunk.

**STEP 7** From the location of the front lower corner of the light, mark a location 4" back along the lower edge of the light (PIC. 4) and then go straight up from that point 1" (PIC. 4).

**STEP 8** Tape the location and mark a spot to drill a hole.

**STEP 9** Make sure there is not anything behind the area where you will be drilling, and drill a pilot hole using a 1/4" drill bit.

**STEP 10** Drill a larger hole using a 1/2" drill bit.

**STEP 11** Remove the four bolts that secure the passenger handles to the seat; remove the handles and remove the seat; set them aside to be reinstalled.

**STEP 12** Refer to PIC. 5 to determine the locations in the left and right front corners of the trunk (near the trunk lid hinge bolts) to drill 1/2" holes.

**STEP 13** Make sure there is nothing behind the area where you will be drilling. (You need to hold the wires out of the way as shown in PIC. 6) Drill a pilot hole using a 1/4" drill bit.

**STEP 14** Drill a larger hole using a 1/2" drill bit.

**STEP 15** Clean the outside of the trunk where the light will be mounted with an included alcohol cleaning pad, and wipe the area with a clean, dry rag.

**STEP 16** Route the wire from the light through the hole drilled in the trunk.

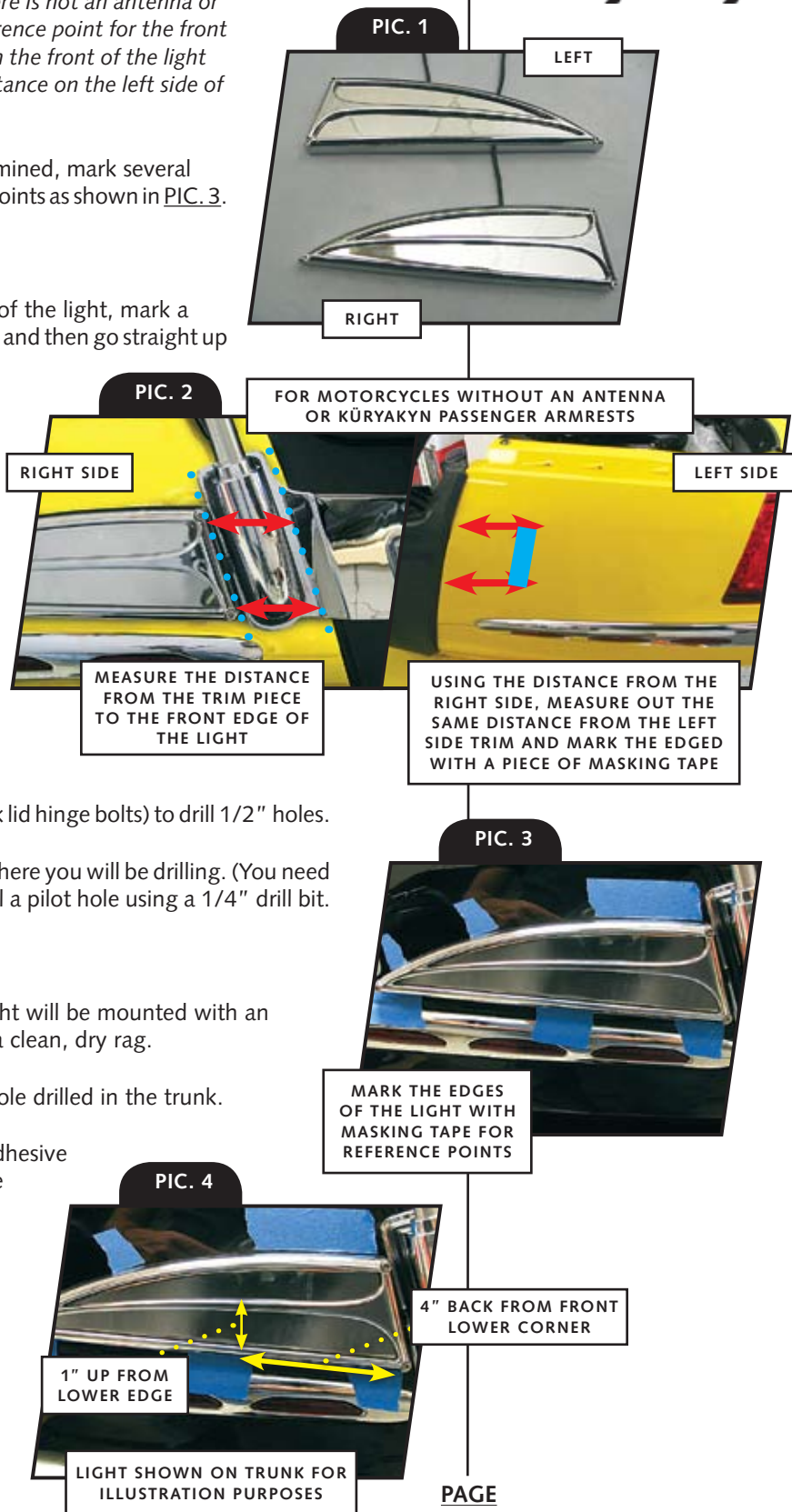
**STEP 17** Using the back of your fingernail, rub the adhesive backing on the light to activate the catalyst and remove the adhesive backing.

**ATTENTION!** Ensure the area of installation is free of grease, oil, dirt or other debris to ensure proper adhesion. Kuryakyn WILL NOT warranty any parts lost due to improper installation.

**ATTENTION!** The adhesive will not bond correctly if applied at temperatures less than 50°F. Do not attempt this installation in temperatures less than 50°F.

**STEP 18** Using the tape reference points, place the light on the trunk, press and hold in place for one minute, full bonding strength will occur in 24 hours.

# Kuryakyn®



PAGE  
**2**

-cont.-

**STEP 19** Repeat STEP 3 through STEP 17 for the left side.

**STEP 20** Route the wires along the inside of the trunk and out through the holes drilled in the front corners of the trunk.

**STEP 21** Make a small slice in the rubber grommets as shown in [PIC. 7](#).

**STEP 22** Place a grommet over each wire and then seat the grommets in the holes in the front corners of the trunk.

**STEP 23** Secure the wires to the inside of the trunk with the included tape.

**NOTE:** *It may be helpful to cut the tape into smaller pieces.*

**STEP 24** Once routed outside the trunk, connect a Y adapter to both wires, ensuring that the wires from each match up (red wire to red wire).

**STEP 25** Remove the side cover on the clutch side as shown in [PIC. 8](#), by gently pulling on it to release the bosses securing the cover.

**STEP 26** Carefully remove the clutch side fairing-molding piece shown in [PIC. 9](#), starting at the bottom of the molding, pulling out to disengage the tabs, working your way up the piece.

**STEP 27** Open the clutch side fairing pocket lid, and remove the four trim clips by pushing in on the center pins, and then pulling the clips out. Set the trim clips aside, as they will be used to reinstall the fairing pocket ([PIC. 10](#)).

**STEP 28** Remove the fairing pocket by pulling it straight up and out.

**STEP 29** Remove the three bolts from the front fairing as shown in [PIC. 11](#); set them aside to reinstall later.

**STEP 30** Remove the rubber grommet from the bottom of the fairing pocket and set aside for now (see [PIC. 10](#)).

**STEP 31** Remove/disconnect the inline fuse on the power wire (red) and insert through the hole in the bottom of the fairing pocket, so that the controller switch will be located in the fairing pocket.

**STEP 32** Carefully insert the remaining wires one at a time, from the control switch through the hole in the bottom of the fairing pocket.

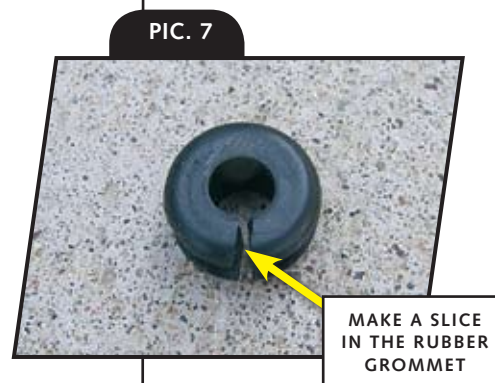
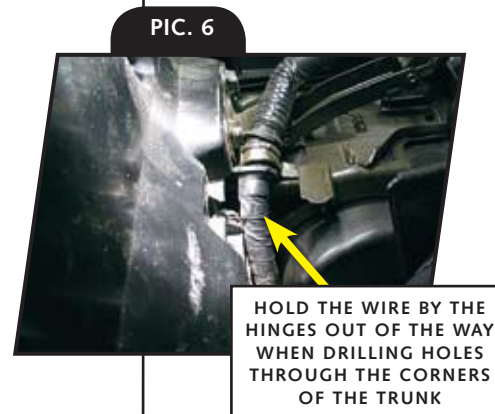
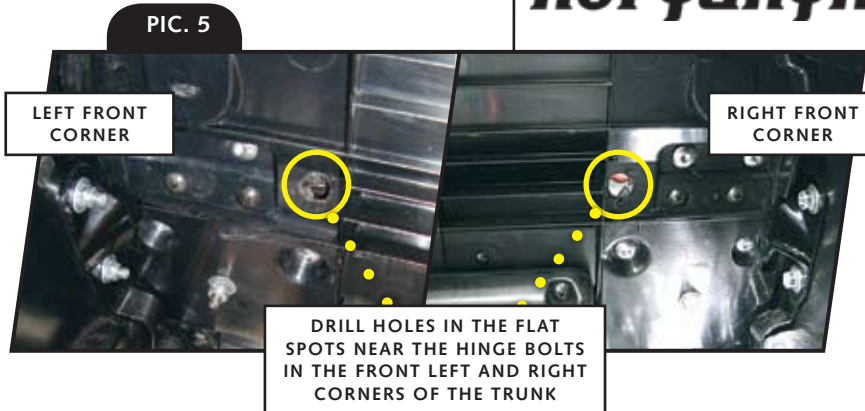
**STEP 33** Connect one of the 102" wire extensions to one of the leads from the control switch.

**STEP 34** Run the power wires (red power and black ground) and the extension through the location for the clutch side, fairing pocket and down along the edge of the fairing as shown in [PIC. 12](#).

**NOTE:** *It may be helpful to tape wires together every 4-6" using electrical tape.*

**STEP 35** Gently pull the fairing out and tuck the wires behind the fairing as shown in [PIC. 13](#).

**ATTENTION!** Secure all wiring away from any moving parts, pinch points or extreme heat. Kuryakyn WILL NOT issue a warranty on any electrical component that fails due to pinched, crimped, broken, abraded, melted or frayed wires.



**STEP 36** Tuck the wires up underneath the fairing as far as possible as shown in [PIC. 14](#).

**STEP 37** Run the wires along the motorcycle frame as shown in [PIC. 15](#), towards the battery.

**STEP 38** Make sure that there is enough wire to connect the power wires to the battery so that they will not be stretched or pinched. Do not connect the power wires to the battery at this time.

**STEP 39** Route the extension wire along the frame towards the trunk, making sure that the wire is tucked out of the way of pinch points, heat and moving parts use the included cable ties to secure the wires.

**ATTENTION!** Secure all wiring away from any moving parts, pinch points or extreme heat. Kuryakyn WILL NOT issue a warranty on any electrical component that fails due to pinched, crimped, broken, abraded, melted or frayed wires.

**STEP 40** Connect the extension to the Y adapter, making sure that the red wires match up.

**STEP 41** Cut a slit/notch in the rubber grommet removed in STEP 30.

**STEP 42** Reinstall the grommet in the bottom of the fairing pocket, placing the wires in the slit/notch in the grommet (see [PIC. 16](#)).

**STEP 43** Reinstall the fairing pocket, make sure that the wires are tucked underneath the fairing pocket and are not being pinched. Secure with the four trim clips removed in STEP 27.

**STEP 44** Secure the clutch-side front fairing using the bolts removed in STEP 29.

**STEP 45** Carefully install the fairing trim starting at the top, inserting the front tab and working your way down the molding, being careful not to break the tabs.

**STEP 46** Reinstall the side cover.

**STEP 47** Choose a mounting location inside the fairing pocket to mount the control switch. Clean the area with an alcohol cleaning pad and allow the area to thoroughly dry (see [PIC. 17](#)).

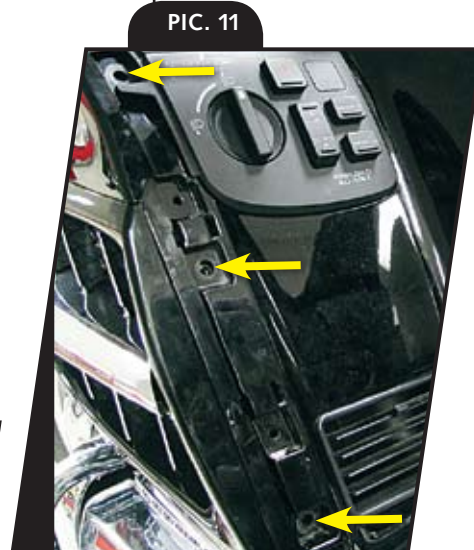
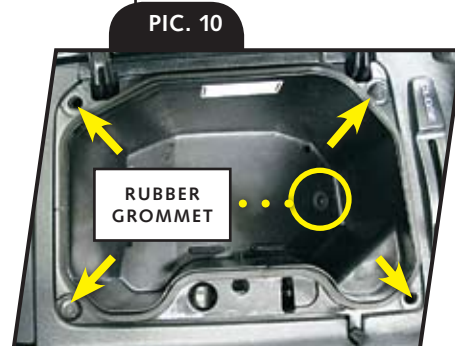
**STEP 48** Using the back of your fingernail, rub the backing of the adhesive pad to activate the catalyst, and then remove the backing.

**STEP 49** Press the switch into place and hold for one (1) minute. Full bonding strength will occur in 24 hours.

**STEP 50** Hook the power leads to the battery, red to positive, and black to negative; secure any remaining wires out of the way using an included cable tie.

**STEP 51** Reinstall the seat and passenger handles using the screws removed in STEP 12.

-cont.-



**ATTENTION!** It is the installer's responsibility to ensure that all of the fasteners (including pre-assembled) are tightened before operation of the motorcycle. Kuryakyn will not issue a warranty on components lost due to improper installation. Periodic maintenance may be required.

**Kuryakyn**<sup>®</sup>

## OPERATION

The controller has a rheostat, a toggle switch, and a push button.

- Use the toggle switch to select "STEADY ON" or "FLASH" modes or to turn the lights "OFF".
- The push button allows the user to select the color they wish to illuminate. There are eight possibilities. The first seven options select an individual color. The eighth option called "PAINT MODE" will continuously cycles the lights through all seven colors, indicated by the white-colored light to initiate the Paint Mode.
- The rheostat varies the flash rate when illuminating a specific color in "FLASH" mode or varies the rate at which the lights cycle through all seven colors if "PAINT MODE" is selected.

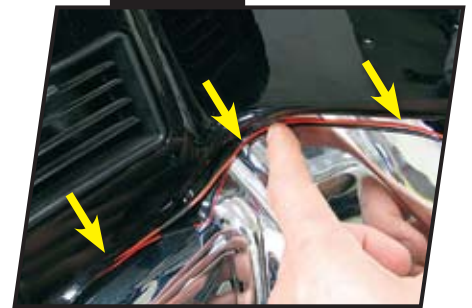
*Ride On!*

PIC. 13

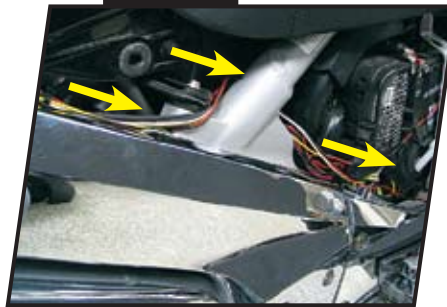


REMOVE THE MOLDING BY PULLING UP AND BACK AT THE BOTTOM FIRST AND WORKING YOUR WAY UP

PIC. 14



PIC. 15



PIC. 16



PIC. 17



PAGE

**5**