

FORWARD CONTROL KIT FOR DYNA 9064

EXTENDED FORWARD CONTROLS

FITS '91-UP DYNA MODELS WITHOUT ENGINE GUARDS; RECOMMENDED FOR INSEAMS 34" AND LONGER

PARTS INCLUDED

- 1 Shift Assembly, Extended Forward Control
- 1 Brake Assembly, Extended Forward Control
- 1 Assembly, Brake Rod and Jam Nuts
- 1 Shift Peg
- 1 Hardware Kit, including:
 - 1 Shift Arm Retainer for '06-up Dyna
 - 1 8-32 x 3/16" SSS Fastener
 - 1 Anti-Seize
 - 2 5/16-24 Nylock Nut, Chrome
 - 2 Ball Joint
 - 4 3/8-16 x 1" FSCS Fastener, Chrome
 - 1 5/16-18 x 1/2 HHCS Fastener, Chrome
 - 1 Cotter Pin, Steel, 1/16 x 1"
 - 1 0.256 x 0.406 x 0.030 Flat Washer
 - 1 1" Clevis Pin, Stainless
 - 1 Anti-Rattle Clip, Rubber Coated
 - 1 Female Clevis, 3/8-24 Internal Thread, Chrome
 - 1 Installation Instructions

Please read and understand entire instructions before starting installation.

THANK YOU FOR CHOOSING KÜRYAKYN!

PLEASE NOTE

- It is the installers' responsibility to make sure all fasteners (including pre-assembled) are tightened before operation of motorcycle. Kuryakyn will not warranty components that are lost due to improper installation. Periodic maintenance may be required.
- Inseam recommendation is intended as a guideline only. Before installing this forward control kit, ensure the peg position will be comfortable. Kuryakyn will not accept returns for this reason after the kit has been installed.

TOOLS SUGGESTED

5/16", 7/32", 3/16", 5/32", 5/64" Allen Wrenches, 3/8", 7/16", 1/2", 9/16" Wrenches and Socket Wrenches, Needle Nose Pliers, Small Flat Tip Screwdriver, Vice Grip or Large Pliers

ATTENTION! Be sure to use the supplied anti-seize on all threaded fasteners before installation. This will make future removal of the fasteners easier.

PROCEDURE

STEP 1 Remove from the motorcycle both drivers footpegs with mounts; the brake linkage, up to but not including the master cylinder assembly; shift lever; shift linkage, and forward cruise pegs and mounts if so equipped.

-cont.-

STEP 2 Using two of the 3/8"-16 x 1" flat head cap screws, mount the brake plate assembly to the frame. Tighten securely.

STEP 3 Place a 5/16" chrome nut on to the longer end of the brake rod and screw the rod all the way into the master cylinder assembly. Test fit the front of the brake rod (with the female clevis) on to the brake pedal by simply sliding the clevis pin in place. Adjust the angle of the brake lever by lengthening or shortening the brake rod, either at the master cylinder plunger or at the clevis. When correctly positioned, the brake pedal should be standing as straight up as possible, without touching the footpeg mount. (If necessary, the lock nut may be eliminated at the connection to the master cylinder to provide additional clearance with the footpeg mount.) Once the brake is adjusted to your liking permanently install the clevis pin through the clevis and brake pedal using the small flat washer and cotter pin.

STEP 4 Using two of the 3/8"-16 flat head cap screws mount the shifter plate assembly to the frame. Install the shift linkage rod between the transmission mounted shift lever and the splined shift shaft. Install the stock gear shift lever on the splined section of the shift shaft. Tighten the gear shifter securely, using its original bolt. The stock rubber shift peg may be unscrewed from the gear shift lever with a vice grip or large pliers. Replace the stock rubber shift peg with the new Kuryakyn peg. Tighten securely.

NOTE The position of the gear shifter may be adjusted by changing its position on the splines, or by lengthening or shortening the shift linkage rod.

STEP 5 Using the 3/8"-24 x 1-1/2" hex bolts, D-washers (as needed) and 3/8"-24 Nylock nuts, install the H-D style male mount footpegs of your choice to the footpeg mounts. Tighten securely.

FOR '91-'05 MODELS

STEP 6 Place the chrome beauty cap over the splines on the original shift shaft. (The splined section protrudes through the primary cover.) Tighten the small setscrew to hold the cap into position. Be sure the set screw tightens against the shaft, not the splines.

STEP 7 Using the 5/16"-18 x 1/2" hex bolt and corresponding thin Nylock nut, fasten the plastic coated anti-rattle clip to the original mid-point shift lever, adjacent to the inner primary cover. The lever may now be rotated to the rear and "wedged" against the inner primary, out of sight.

STEP 8 Double check the tightness of all fasteners. Check for free unrestricted function of all controls affected by this installation.

FOR '06 - UP MODELS

STEP 6 Place a small amount of blue Loctite on the threads of the shift arm retainer then install the retainer on the forward arm. Thread the retainer into the arm until it stops, then unscrew the retainer so that it is oriented as shown in [PIC.1](#).

STEP 7 Drop the shift arm so that the retainer fits into the profile of the inner primary case; once seated, hold the retainer firmly in place against the inner primary case. See [PIC.2](#).

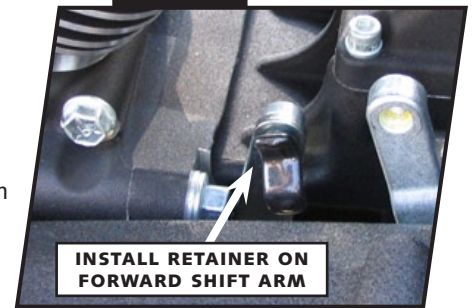
STEP 8 Install the 8-32 x 3/16" set screw into the chrome beauty cap. Place the cap over the splined shaft; while holding the retainer against the inner primary case, compress the rubber spacer and secure the cap with the set screw. Ensure that the set screw is fastened against the shaft and not on the splines. See [PIC.3](#).

STEP 9 Double check the tightness of all fasteners. Check for free unrestricted function of all controls affected by this installation.

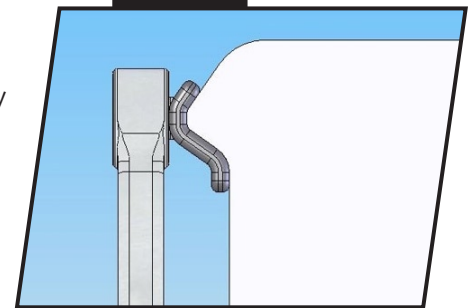
CAUTION: BE SURE TO FAMILIARIZE YOURSELF WITH THESE NEW CONTROLS BEFORE RIDING ON PUBLIC ROADS.

Kuryakyn®

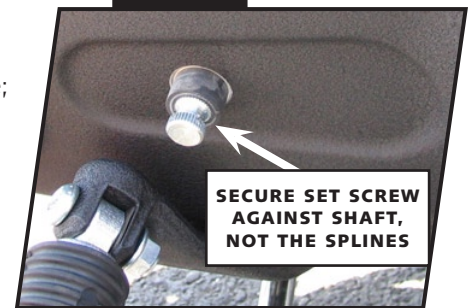
PIC.1



PIC.2



PIC.3



PAGE
2

Ride On!

FORWARD CONTROLS INSTALLATION